

## Mouse PD-1/PDCD1 Protein

Cat. No. PD1-MM201



### Description

<b>Source</b>	Recombinant Mouse PD-1/PDCD1 Protein is expressed from HEK293 with hFc tag at the C-Terminus.
	It contains Leu25-Gln167.
<b>Accession</b>	NP_032824
<b>Molecular Weight</b>	The protein has a predicted MW of 42.9 kDa. Due to glycosylation, the protein migrates to 60-70 kDa based on Bis-Tris PAGE result.
<b>Endotoxin</b>	Less than 1 EU per µg by the LAL method.
<b>Purity</b>	>95% as determined by Bis-Tris PAGE
	>95% as determined by HPLC

### Formulation and Storage

<b>Formulation</b>	Lyophilized from 0.22 µm filtered solution in PBS (pH 7.4). Normally 8% trehalose is added as protectant before lyophilization.
<b>Reconstitution</b>	Centrifuge the tube before opening. Reconstituting to a concentration more than 100 µg/ml is recommended. Dissolve the lyophilized protein in distilled water.
<b>Storage</b>	-20 to -80°C for 12 months as supplied from date of receipt. -80°C for 3 months after reconstitution. Recommend to aliquot the protein into smaller quantities for optimal storage. Please minimize freeze-thaw cycles.

### Background

Programmed cell death protein 1, also known as PD-1 and CD279, is a protein found on the surface of cells that has a role in regulating the immune system's response to the cells of the human body by down-regulating the immune system and promoting self tolerance by suppressing T cell inflammatory activity.

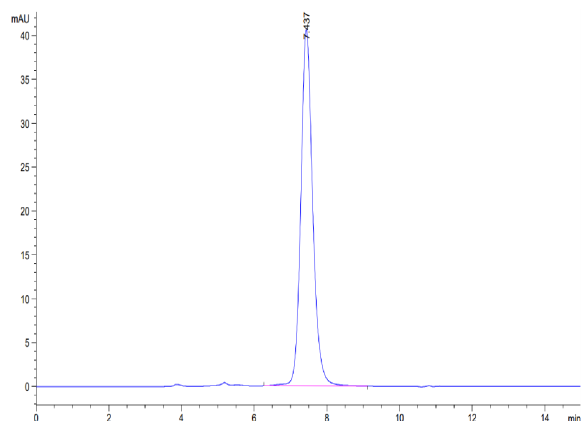
### Assay Data

#### Bis-Tris PAGE



Mouse PD-1 on Bis-Tris PAGE under reduced condition. The purity is greater than 95%.

#### SEC-HPLC



The purity of Mouse PD-1 is greater than 95% as determined by SEC-HPLC.

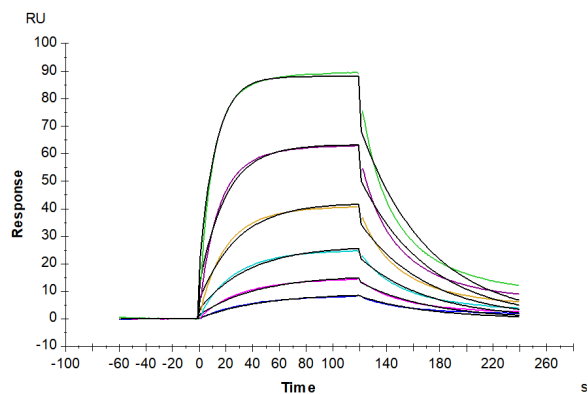
## Mouse PD-1/PD-CD1 Protein

Cat. No. PD1-MM201



### Assay Data

#### SPR Data



Mouse PD-L1, His Tag captured on CM5 Chip via anti-his antibody can bind Mouse PD-1, hFc Tag with an affinity constant of 0.62  $\mu\text{M}$  as determined in SPR assay (Biacore T200).